

2018 SUSTAINABILITY REPORT

Harvard Medical School



HARVARD
UNIVERSITY

Sustainability



HARVARD
MEDICAL SCHOOL



EDUCATE AND
EMPOWER



LEARN IT.
LIVE IT.

TRANSLATE
RESEARCH



INSTITUTIONALIZE

AMPLIFY
IMPACT



HARVARD
Office for Sustainability



HARVARD
MEDICAL SCHOOL

GREEN.HARVARD.EDU

[#GREENHARVARD](https://twitter.com/GREENHARVARD) [@GREENHARVARD](https://www.instagram.com/GREENHARVARD)



HARVARD UNIVERSITY SUSTAINABILITY PLAN

- Water Conservation Measures
- Longwood Reuse Room reopened!
- Freecycle and E-waste collection
- Waste diversion efforts
- Healthier Building Materials Academy

- Sustainable Meeting and Event Guide
- Bike Fair
- Take the Stairs Campaign

EMISSIONS AND ENERGY

CAMPUS OPERATIONS

NATURE AND ECOSYSTEMS

HEALTH AND WELL-BEING

CULTURE AND LEARNING

- ...
- HMS Facilities Energy Manager Green Hero recognition
- ULT Freezer preventative maintenance
- HMS Facilities external presentations

- Countway Community Garden
- Arnold Arboretum Tour

- SEAM student org.
- Green Lab Certification
- Sustainable Student Event Fund
- Earth Month Sustainability Fair
- Commencement & White Coat Waste Diversion
- Lighting Fairs

Harvard University Announced Science-based climate goal

HARVARD'S CLIMATE ACTION PLAN:

FOSSIL FUEL-FREE BY 2050

FOSSIL FUEL-NEUTRAL BY 2026

green.harvard.edu/climate

Harvard Medical School and HMS Affiliates Announced Decarbonization Commitment

The Boston Globe

OPINION | GEORGE Q. DALEY, ASHISH JHA, AND AARON BERNSTEIN

**Climate change threatens public health and
doctors' ability to provide care**

Decarbonizing Health Care



*Harvard Medical School, teaching hospitals, clinical institutes
sign joint commitment to reduce greenhouse gas emissions*

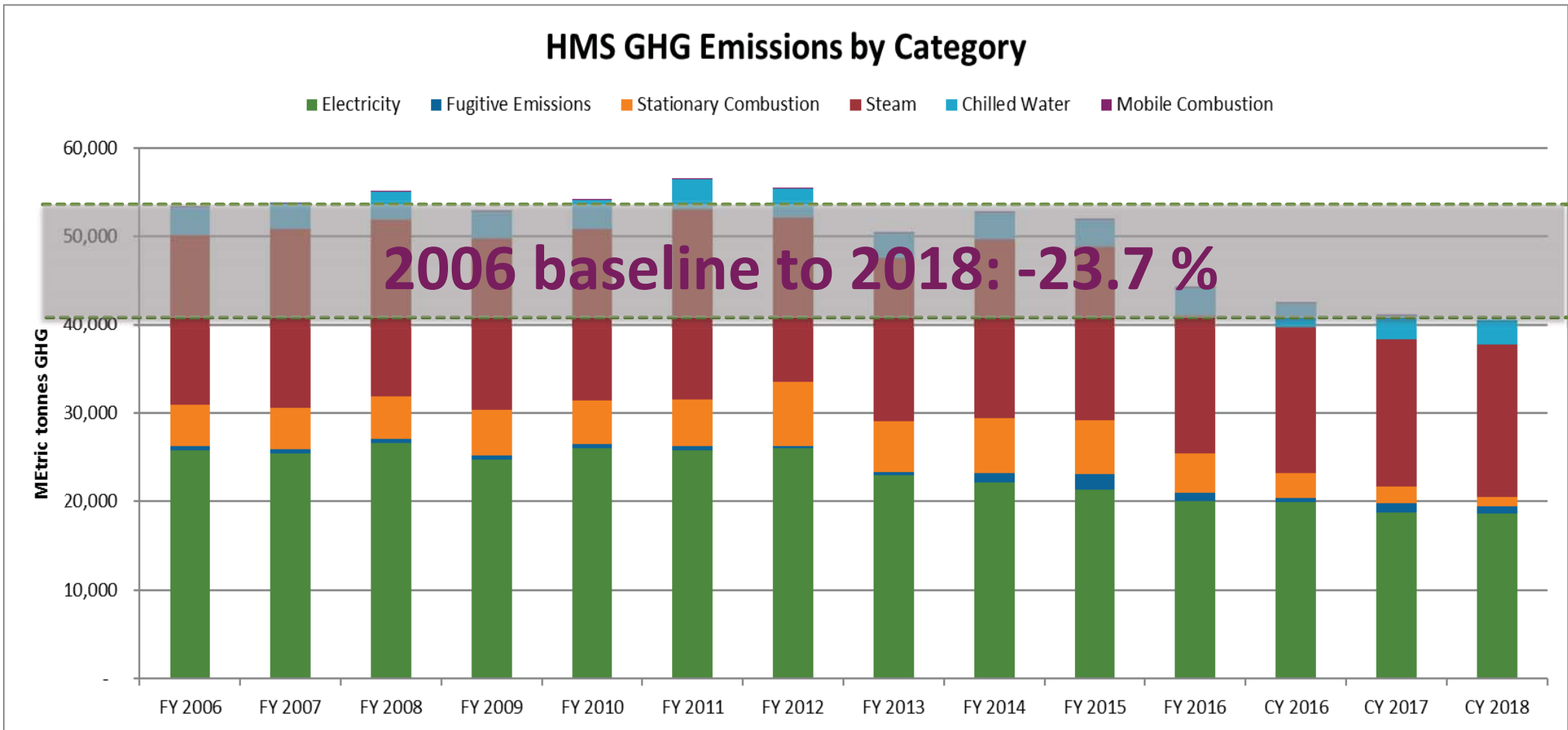
Harvard Medical School and HMS Affiliates Announced Decarbonization Commitment

Participating hospitals, groups and clinical institutes:

- **Beth Israel Deaconess Medical Center** (Signatory: Kevin Tabb, CEO, and Pete Healy)
- **Partners Healthcare** (Signatory: David Torchiana, CEO)
- **Boston Children's Hospital** (Signatory: Sandra Fenwick, CEO)
- **Cambridge Health Alliance** (Signatory: Patrick Wardell, CEO)
- **Dana-Farber Cancer Institute** (Signatory: Laurie Glimcher, CEO)
- **Joslin Diabetes Center** (Signatory: Peter Amenta, CEO)
- **Harvard Medical School** (Signatory: George Q. Daley, Dean)

Emissions and Energy

HMS GREENHOUSE GAS EMISSIONS REDUCTION PROGRESS



*Metric Tonnes GHG = Metric Tons of Carbon Dioxide Equivalent

Fugitive Emissions - Pollutant released into air from leaks in equipment, pipe-lines, seals, valves, etc.

Stationary Combustion - A fixed-site producer of GHG, mainly power plants and other facilities using

Emissions and Energy

HMS ENERGY USAGE KBTU/FT² BY BUILDINGS

Buildings	KBTU/ft ²	Buildings	KBTU/ft ²
Gordon Hall	146.57	LHRRB	317.03
Goldenson	247.47	Mudd	452.15
C Building	212.23	Warren Alpert	327.72
Armenise	208.05	Vanderbilt	102.63
Modell	260.17	Countway	178.67
TMEC	208.49	Dental total	303.56
180 Longwood	118.82	NRB	253.87

Total

243.17

EMISSIONS AND ENERGY



HMS energy savings 5 common/central strategies

- 1 Energy Audits Determine and evaluate opportunities
- 2 Preventative Maintenance Regular upkeep and performance enhancement of existing equipment
- 3 Corrective Maintenance Remediation of faults or performance deficiencies that were identified
- 4 Energy Efficiency Upgrades Larger-scale project with energy/resource savings – typically equipment upgrades or replacements
- 5 Data Management and Analytics Improve troubleshooting and predictions of campus energy use

EMISSIONS AND ENERGY

ENERGY AUDITS

4 HMS buildings

COUNTWAY LIBRARY
GOLDENSON

GORDON HALL
NEW RESEARCH BUILDING

40 energy conservation measures (ECM) identified

\$19k average utility cost savings per ECM

\$775k total estimated utility cost savings

4.4yrs average simple payback

EMISSIONS AND ENERGY

ENERGY AUDITS

4 HMS buildings

COUNTWAY LIBRARY
GOLDENSON

GORDON HALL
NEW RESEARCH BUILDING

Potential savings

3,255,000 electricity (kWh)

3,325 steam (mmBTU)

175,000 chilled water (ton-hours)

393,000 water and sewer saved (cubic feet)

*Estimated savings if all ECMs fully implemented as proposed.

*Estimates based on EPA GHG equivalencies calculator

EMISSIONS AND ENERGY

ENERGY CONSERVATION PREVENTATIVE MAINTENANCE PROGRAMS

STEAM TRAP TESTING

1,288

steam traps surveyed

82.4%

steam traps in good working order

<4%

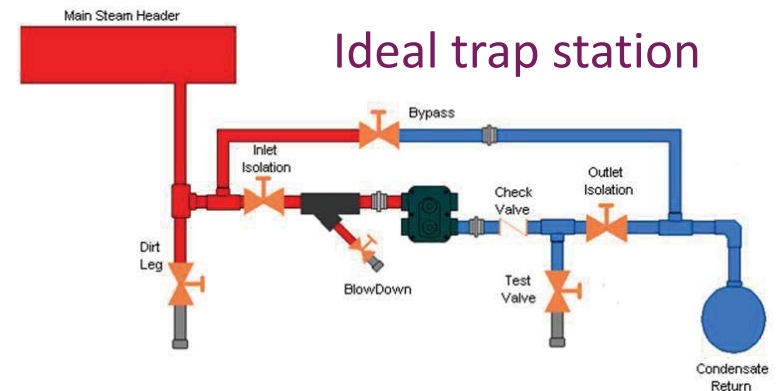
leaking, blowing, or plugged traps

3,970,000

estimated pounds of steam lost annually

153 days

return on investment (ROI) if all are repaired



EMISSIONS AND ENERGY

ENERGY CONSERVATION PREVENTATIVE MAINTENANCE PROGRAMS ULTRA-LOW-TEMP FREEZERS

HMS Facilities continued a preventative maintenance (PM) program on Harvard-owned Ultra-Low-Temperature (ULT) freezers operating below **-65**.

In 2018 the program included **268** freezers. PM included replacement of air filters and conditional assessment of the gaskets, condenser coils, evaporators, and temperature alarm points and backup batteries, which are replaced on a 2-3 year timeframe.

Energy savings are associated with keeping freezer coils and filters free of dust, allowing for proper heat exchange. The PM program saves energy while providing a more secure environment for research samples.



EMISSIONS AND ENERGY

CORRECTIVE MAINTENANCE

COMPRESSED GAS LEAK TESTING

Identified opportunities

66 Compressed air leaks

5 Steam leaks

1 Helium leak

1 Nitrogen leak

1.3 ROI (years)

Issues remaining

0

Leaks in a compressed air system can waste **20-30%** of the compressor's output and lead to unnecessary cycling and increased run time.

Addressing leaks can increase service life and decrease necessary maintenance of equipment.

EMISSIONS AND ENERGY



ENERGY EFFICIENCY UPGRADES

SEELEY MUDD VENTILATION OPTIMIZATION

160,000 Total space impacted (sqft)

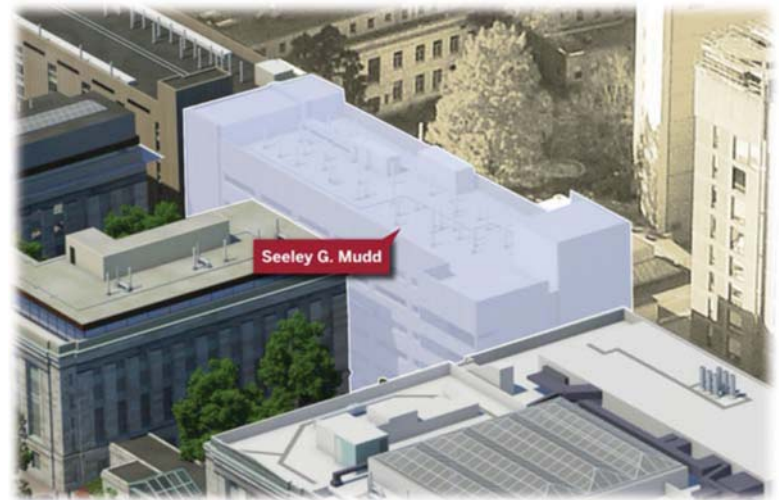
Annual Savings

10,000 Ventilation (CFM)

42,800 Electricity (kWh)

66,900 Chilled Water (ton-hr)

1,200 Steam (kLB)



The volume of outdoor air being conditioned for the building was optimized.

Flow stations on constant volume air handlers were recalibrated

VFD sequence of operations was modified to maintain ventilation targets.

EMISSIONS AND ENERGY

ENERGY EFFICIENCY UPGRADES

COUNTWAY LIBRARY VENTILATION OPTIMIZATION

160,000 Total space impacted (sqft)

Annual Savings

30,000 Ventilation (CFM)

41,000 Electricity (kWh)

22,800 Chilled Water (ton-hr)

600 Steam (mmBTU)



The volume of outdoor air being conditioned for the building was optimized.

New minimum CFM settings established for ~210 VAV terminals between floors L1 - 5
“Occupied/Unoccupied” airflow rates were recalibrated and are determined by occupancy sensors or schedule, depending on location.

EMISSIONS AND ENERGY

ENERGY EFFICIENCY UPGRADES

WARREN ALPERT VENTILATION OPTIMIZATION

286,000 Total space impacted (sqft)

Annual Savings

13,000 Avg. ventilation redux (CFM)

41,000 Electricity (kWh)

94,000 Chilled Water (ton-hr)

1,400 Steam (mmBTU)

48,900 Humidification water (Gals)



The volume of outdoor air being conditioned for the building was optimized.

New minimum CFM settings established for ~120 VAV terminals between floors 1 - 5
“Occupied/Unoccupied” airflow rates were recalibrated and are determined by occupancy sensors or schedule, depending on location.

EMISSIONS AND ENERGY

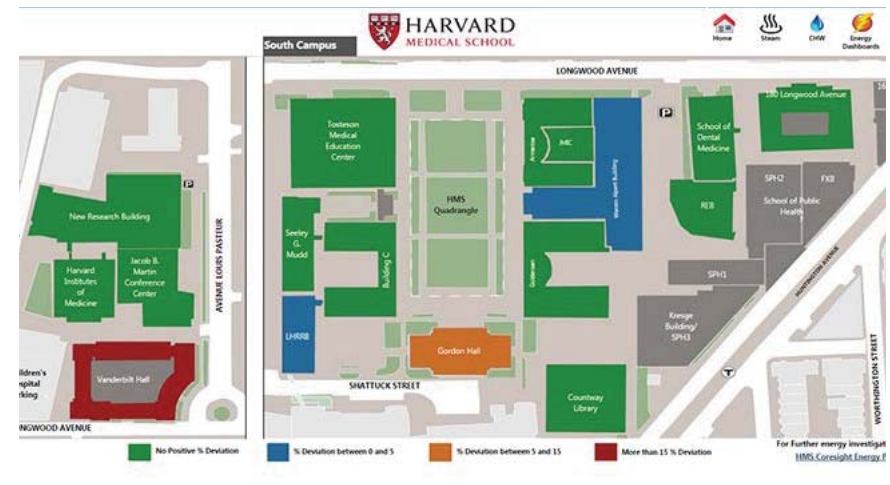
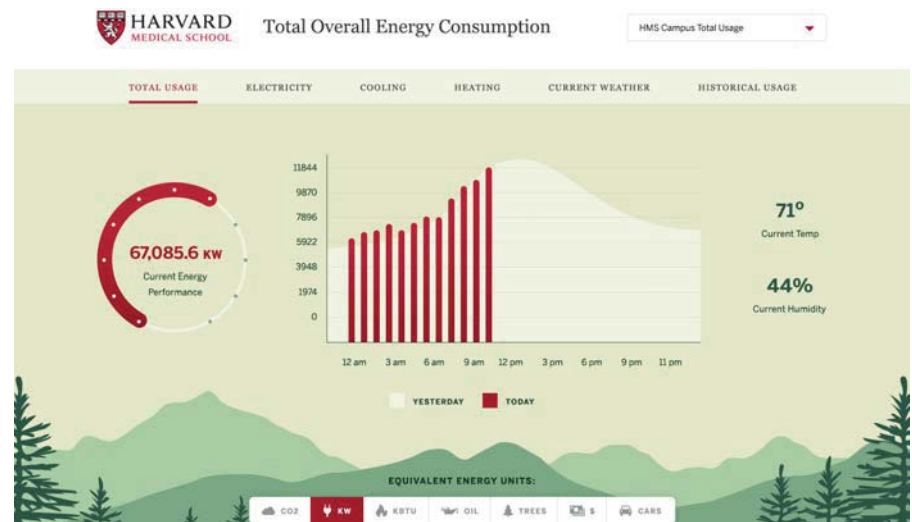


ENERGY DATA MANAGEMENT AND ANALYTICS

HMS rolled out new energy dashboards to facilitate operational improvements and transparency to the HMS community.

The current Campus Energy Consumption dashboard depicts actual and historical energy consumption that can be displayed in a variety of equivalent energy units (i.e. oil, trees, cars).

The new Campus Energy Heat Map is used to efficiently convey energy performance to building operators, letting them know if buildings are within-expected range or trending higher, thereby instigating investigation.



EMISSIONS AND ENERGY

HMS FACILITIES PRESENTS:

LABORATORY BUILDING ENERGY AND RESOURCE MANAGEMENT STRATEGY

HMS Facilities presented to an array of audiences at several venues:

- International Institute for Sustainable Laboratories (I2SL)
- Nanyang Technical University, Singapore
- Cambridge Compact
- Harvard's Energy and Sustainability Professionals Network (ESPN)
- Harvard's Sustainability and Energy Management Council



**NANYANG
TECHNOLOGICAL
UNIVERSITY**
SINGAPORE



EMISSIONS AND ENERGY

HMS FACILITIES ENERGY MANAGER RECEIVED HARVARD HERO FOR COMMITMENT TO SUSTAINABILITY



greenharvard • Following
Harvard University

greenharvard Harvard Medical School's Don Gillis was recently nominated by his peers and recognized as a "Harvard Hero" for his outstanding work ethic and commitment to sustainability.

As the HMS Energy Manager and one of our constant collaborators, Don exemplifies how we are able to build a more sustainable campus — through our people.

Here's the citation that was read by President Drew Faust to Don at the University-wide employee recognition event: "Don Gillis, as the Medical School's guardian of energy, you've established green guidelines, mapped out mechanical improvements and sold stakeholders on sustainable systems. Your efforts have led to a 20% reduction in greenhouse gas emissions."



Liked by harvardchansph and 106 others

JUNE 25, 2018

Add a comment...



Don has since taken on a role as the Facilities Operations Leader at the new Bill and Melinda Gates Medical Research Institute based in Cambridge. We wish him and the organization the best in achieving their mission!

CAMPUS OPERATIONS



HEALTHIER BUILDING MATERIALS STRATEGY

- ✓ Teams from HMS and HSPH joined presentations by faculty researchers and campus sustainability leaders regarding strategies to eliminate potentially hazardous chemicals from building materials and finishes.
- ✓ Capital projects and construction teams begin implementing healthier building materials strategies by purchasing Healthier Hospital Initiative compliant furniture and evaluating existing product lines to evaluate compliance and identify potential alternatives where products were non-compliant.



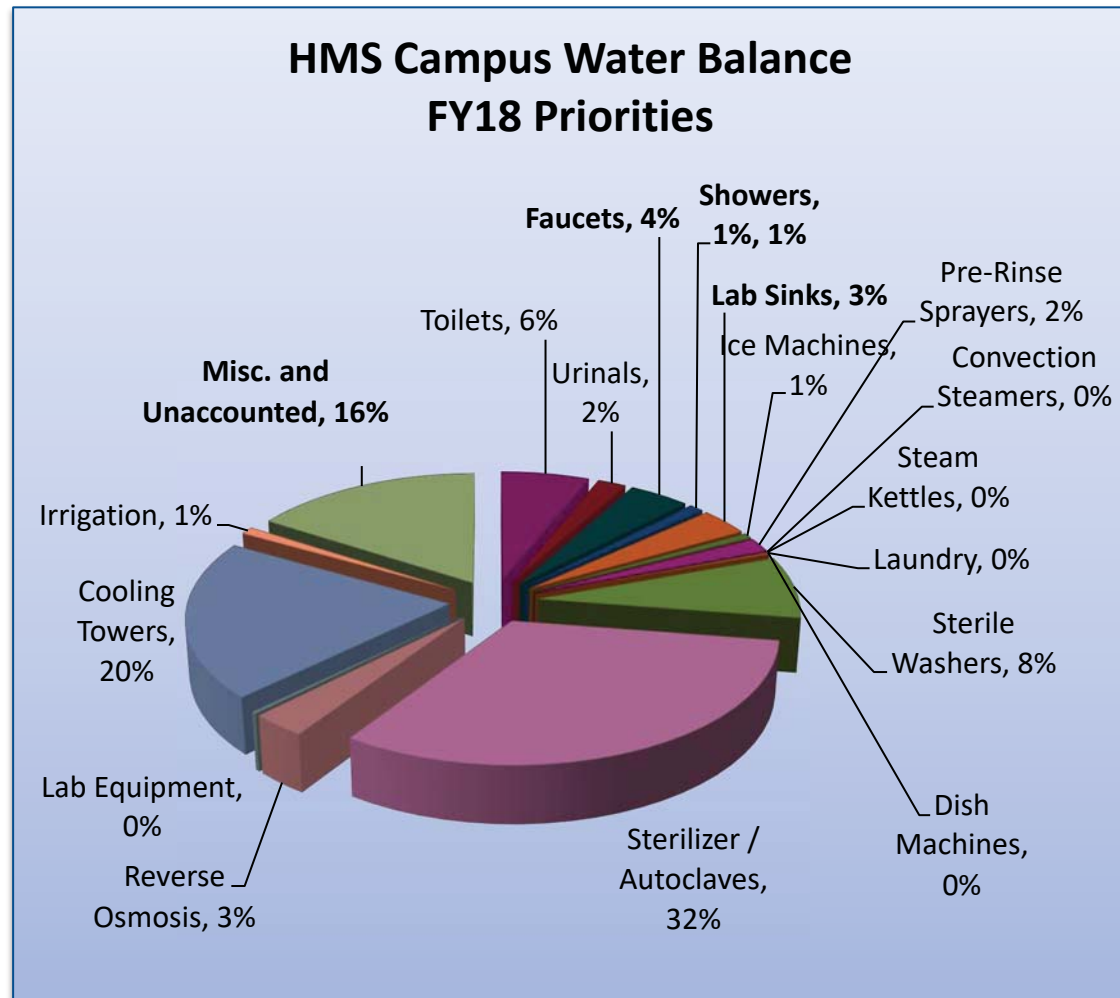
CAMPUS OPERATIONS

WATER CONSERVATION

HMS presented to the Cambridge Compact for a Sustainable Future on, “Incorporating Water Efficiency into Energy Management Planning.”

HMS Labs began piloting low-flow lab-faucet aerators

HMS is investigating sterilizer and glass washing efficiency measures.



CAMPUS OPERATIONS



WASTE REDUCTION & DIVERSION

- ✓ HMS continues to implement waste bin standardization across the campus.
- ✓ Compost was expanded to bathrooms across campus, allowing paper towels to be diverted from the waste stream.
- ✓ Global markets impacted recycling guidelines, restricting laboratory plastics to trash. Facilities and Custodial teams continue to engage labs and the HMS community to minimize contamination.



LEARN IT.
LIVE IT.



WE'VE GOT A GOAL to reduce waste per capita 50% by 2020 from a 2006 baseline, with the aspirational goal of becoming a **zero-waste campus**

CAMPUS OPERATIONS

HARVARD GREEN IT STANDARDS RELEASED

A photograph of a Harvard University building with a green semi-transparent overlay. The text 'HARVARD UNIVERSITY SUSTAINABLE IT STANDARDS' is written in white on the overlay. Below the main title, 'December 2017' is written in white. The background shows a brick building with a modern glass extension and some trees.

HARVARD UNIVERSITY SUSTAINABLE IT STANDARDS

December 2017

For more information:

<https://green.harvard.edu/sites/green.harvard.edu/files/SustainableITStandards.pdf>

CAMPUS OPERATIONS

FREecycle AND E-WASTE COLLECTION CAMPAIGN

HMS hosted bi-annual freecycles, organized by EcoOpportunity, where lab, office, and personal items are made available for reuse to all members of the community.

The Longwood Campus also participated in a University-wide effort in collaboration with IT Security to collect personal and University electronic waste for free.

Over 9,000lbs of e-waste was collected across Harvard – a substantial amount of which came from the Longwood campus.

Secure + Sustainable Free Electronics Recycling



Safely and securely recycle **personal and University electronics** for free.
No limits. Any location. Certificate of Secure Destruction available.

April 25	11:00 - 1:30	Chan SPH Kresge Building Atrium
April 26	8:30 - 3:00	HMS Courtyard Café

Computer equipment | routers | keyboards | mouse | printers | scanners | fax machines | credit card machines | telephones | mobile phones | answering systems | cameras | surveillance equipment | stereos | video equipment | gaming equipment | cables | power cords | wiring capacitors | diodes | resistors | transistors and more

Not accepted: refrigerators, washing machines, dryers, AC units, CRT monitors, televisions, loose batteries

CAMPUS OPERATIONS



REOPENED LONGWOOD CAMPUS REUSE ROOM!

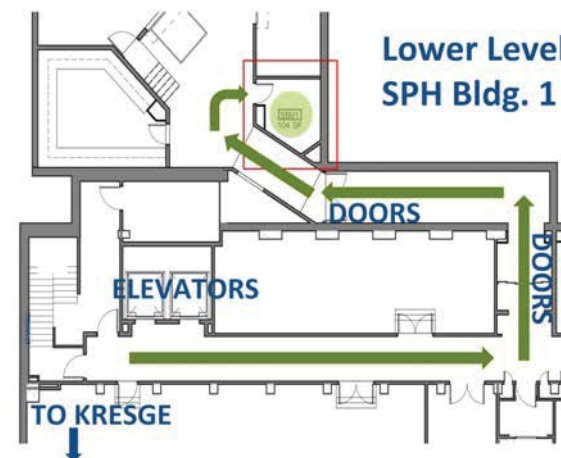


LONGWOOD CAMPUS REUSE ROOM

REOPENING NOVEMBER, 2018!
OPEN TO HARVARD'S LONGWOOD COMMUNITY

Help green your lab, office, and life by
REUSING AND SHARING equipment!

SPH Bldg.1 Loading Dock – Room SB-01
Open **Wednesdays from 12:30-2pm**



ACCEPTED ITEMS

- ✓ LAB EQUIPMENT
- ✓ ELECTRONICS
- ✓ OFFICE SUPPLIES
- ✓ HOME ITEMS

LEARN IT.
LIVE IT.



WE'VE GOT A GOAL to reduce waste per capita 50% by 2020 from a 2006 baseline, with the aspirational goal of becoming a **zero-waste campus**

NATURE AND ECOSYSTEMS



COUNTWAY COMMUNITY GARDEN



Increased programming and budgetary support from HMS.

Purchased new garden beds.



Annual **Fall Harvest** festival



Annual **Summer Garden Gathering**



For more information:

<https://www.hsph.harvard.edu/news/features/countway-harvest/>

NATURE AND ECOSYSTEMS



BI-ANNUAL TOUR OF HARVARD'S ARNOLD ARBORETUM



greenharvard • Following
Arnold Arboretum of Harvard University

greenharvard Signs of spring at the @arnold_arboretum!
Students from the @harvardchansph Sustainability + Health Student Forum and the Hiking Club recently joined together for an #EarthDay inspired tour of the Arboretum.
#greenharvard #harvard #sustainability #getoutside #spring #arnoldarboretum #boston #outdoors #health #wellbeing



Liked by bretttootis and 140 others

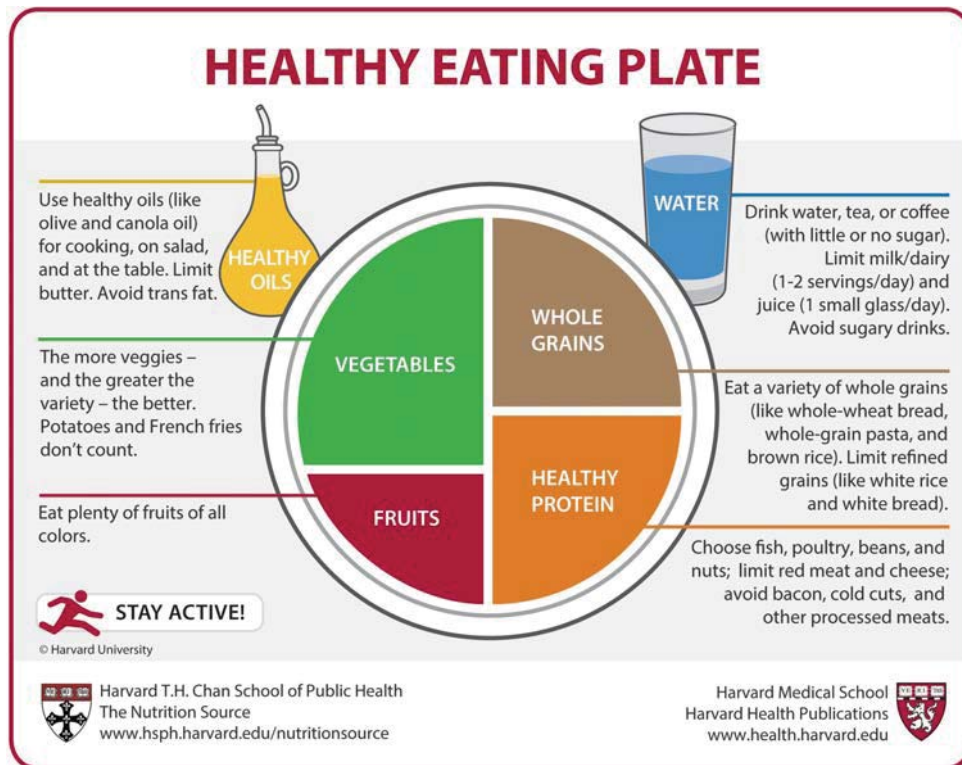
MAY 1, 2018

Add a comment...



HEALTHY AND WELL-BEING

Healthy Eating: Nutrition and Sustainability



Sustainable and Healthful Food Standards Working Group



Participation in MASCO's Farm to LMA



Sustainable food sourcing through Restaurant Associates



Harvard #FoodBetter Conference



HEALTH AND WELL-BEING

Healthy Eating: Nutrition and Sustainability

Sustainable Meeting and Event Guide Launched

HMS Dining Services' catering menu includes a variety of compliant menu options for any meeting or event.

For more information:
<https://green.harvard.edu/campaign/sustainable-meeting-and-event-guide>

TOP 10 TIPS FOR BETTER MEETINGS

FROM THE HARVARD SUSTAINABLE MEETING AND EVENT GUIDE

The Harvard Sustainable Meeting and Event Guide was created to support a culture of health and wellness in meetings and conferences across the University. Start with these 10 tips to help employees, students, and visitors eat well and be active while reducing their environmental impact.

FOOD AND BEVERAGES

Always ask caterers to label common allergens, such as nuts and shellfish.

- Make pitchers of tap water the featured beverage. Add fruit to some pitchers for a flavor-infused option.
- Opt for plant-based proteins for the main dish, like beans, lentils, or tofu.
- Offer fruits and/or vegetables every time food is served.
- Always serve whole grains instead of refined grains (like brown rice in place of white rice).
- When offering snacks, serve whole or cut fruit, vegetables and hummus, or unsalted nuts.
- Coffee and tea make for a satisfying end to a meal. If dessert is necessary, opt for a combination of dark chocolate, fresh fruit, and unsalted nuts.



WASTE REDUCTION

- Ask your caterer to use reusable, recyclable, or compostable serving items.
- Make sure your meeting room has a "waste station" with clearly-marked recycling, compost, and trash bins.



MOVEMENT

- Periodically break up sitting time with standing, walking, or light stretching.
- Inform attendees of which stairwells, elevators, and restrooms they may use, including any on other floors.



CHECK OUT THE FULL GUIDE AT [GREEN.HARVARD.EDU/EVENTGUIDE](https://green.harvard.edu/eventguide)

HEALTH AND WELL-BEING

Take the Stairs

TAKE THE STAIRS CONTINUED ACROSS HARVARD UNIVERSITY

INCLUDED CLIMBERS FROM ALL 13 SCHOOLS AND INSTITUTIONS AT HARVARD

- 2016: 577 Participants | 58 teams reached Meru's summit!**
- 2017: 1,128 Participants | 229 teams reached Pierce Peak 4x**
- 2018: 617 Participants | 114 teams traversed NH's Presidential Range**



Refreshed the TtS website

Participants engaged on social media from across the world!

**1.37 flights or
20 million feet “climbed”**

HEALTH AND WELL-BEING



The Longwood Campus has over **900 bike racks!**

The Harvard Longwood Bicyclists engages stakeholders across the Longwood Campus with **over 1,500 members**. The group advocates for advancement in bike-friendly infrastructure and parking, provides safety and learn-to-bike lessons for the Harvard community,

HARVARD LONGWOOD BIKE FAIR

~~WEDNESDAY~~ ²¹ THURSDAY, SEPTEMBER 20, 2017

11:30AM – 1:30PM ON THE QUAD PROMENADE AT HMS

(RAINDATE – SEPTEMBER 21, 11:30AM – 1:30PM)

- FREE BASIC BIKE TUNEUPS AND GIVEAWAYS
- MINI CLASSES ON MAINTENANCE & SAFETY
- BIKE VENDORS & INFO FOR AREA CYCLISTS

BIKE FAIR UPDATES:
WWW.HSPH.HARVARD.EDU/BIKES



✓ New bike racks in bike cages

✓ Annual Bike Fair

CULTURE AND LEARNING



LAUNCHED:
Harvard
Green Lab
Certification



<https://green.harvard.edu/news/green-lab-certification-program-launches-longwood-medical-campus>

CULTURE AND LEARNING



Green Lab Certification

- Systematic, self-directed assessment
- Designed for all lab-types
- Engages all lab members
- Tiered Certification (Leaf 1-4)



<https://green.harvard.edu/news/green-lab-certification-program-launches-longwood-medical-campus>

CULTURE AND LEARNING



Green Lab Certification

3 HMS labs certified as of 12/18

- ICCB-L – **Leaf 4**
- Genetics Media Prep and Glass Washing – **Leaf 4**
- Harper Lab, Cell-Bio – **Leaf 3**



<https://green.harvard.edu/news/green-lab-certification-program-launches-longwood-medical-campus>



CULTURE AND LEARNING

HMS Students for Environmental Awareness in Medicine (SEAM)

The
Harvard
Gazette

“We have a moral obligation to mobilize and address climate change, as we treat and will continue to treat patients impacted by it.” – Shadaab Kazi, HMS '21

HEALTH & MEDICINE

Environmental medicine brings climate change to forefront

<https://news.harvard.edu/gazette/story/2018/05/medical-school-students-address-environmental-issues-from-physicians-perspective/>

CULTURE AND LEARNING



HMS Students for Environmental Awareness in Medicine (SEAM)



At a panel discussion at the Medical School, members of Students for Environmental Awareness in Medicine, including event planner Shadaab Kazi, gave the physicians' perspective on how environmental issues will impact human health. Photos by Kris Snibbe/Harvard Staff Photographer

<https://green.harvard.edu/news/green-lab-certification-program-launches-longwood-medical-campus>

CULTURE AND LEARNING



EcoOpportunity, Harvard's Longwood Campus Green Team

EcoOp's Sustainable Student Event Fund Launched Fall '18

The fund provides supplemental funding to student organizations towards meetings or events that wish to comply with the Sustainable Meeting and Event Guide and/or are focused on topics pertaining to climate, sustainability, and health.

For more information:

<https://green.harvard.edu/longwoodeventfund>

**\$USTAINABLE
\$TUDENT
ORGANIZATION
EVENT FUND**

Did you know that EcoOpportunity provides supplemental funding to support events organized by Harvard Longwood Campus student organizations?

For funding criteria and application details, visit:
green.harvard.edu/longwoodeventfund

ecoopportunity

HARVARD
LONGWOOD CAMPUS

Applications accepted on a rolling basis and must be submitted at least three weeks prior to scheduled event.

The graphic features a stylized tree with a green trunk and branches. The leaves are green circles containing white dollar signs. The text is arranged vertically along the right side of the tree. The background is a solid green color. At the bottom, there are logos for EcoOpportunity and Harvard Longwood Campus, along with a note about application timing.

CULTURE AND LEARNING



EcoOpportunity, Longwood's green team, led efforts throughout the year that engaged the entire Longwood campus community

HMS Commencement & White Coat Ceremony Waste Ambassadors



CULTURE AND LEARNING



Longwood Lighting Fairs

HMS: 50 attendees participated, that purchased 708 products. In addition, we also raised \$215 for the Mass Fallen Hero Campaign.

HSPH: 42 attendees participated, that purchased 646 products. In addition, we also raised \$215 for the Mass Fallen Hero Campaign.

Harvard Chan
HSPH FXB Atrium

Harvard Medical
HMS Courtyard Café

Dec., 11th & 12th, 2018

11:30 a.m. - 2:00 p.m.

ENERGY-SAVING LIGHTING FAIR

Hosted By:

Made Possible By:

LED Starter Kit Includes

limit 4 kits per customer

(1) 5W LED DESK LAMP
(40W OUTPUT)
available in a variety of colors

(4) 9W LED A19s
(60W OUTPUT)

(4) 11W LED A19s
(75W OUTPUT)

(4) 16W LED A21s
(100W OUTPUT)

(2) 5/9/16W LED
3-WAY A21
(40/60/100W OUTPUT)

\$10

LED Indoor Flood Lights

- \$2** BR20
8W usage = 50W output
110° beam spread
- \$4** BR40
12W usage = 85W output
110° beam spread
- \$6** PAR38
13W usage = 90W output
40 degree angle

All 8-Packs just \$10

- \$10** 8-PACK BR30
8W usage = 65W output
- \$10** 8-PACK CANDLE
4W usage = 40W output
- \$10** 8-PACK GLOBE
7W usage = 60W output

Advanced Power Strips

TRICKLESTRIP TIER 1 APS
1 - control outlet
2 - always on outlets
4 - switched outlets
\$10

TRICKLESTRIP TIER 2 APS+
1 - control outlet
2 - always on outlets
4 - switched outlets
1 - multi-sensor
\$20

Gadget Corner

DIRECTIONAL NL 2-PACK
(a variety of nightlights are available starting at \$3.00)
\$5

MULTI-COLOR LED STRANDS OF LIGHT
• 70 LED Indoor / outdoor
• connect up to 43 sets
• weather resistant
• connects end-to-end
\$12

Bulbs available in warm white and daylight tones in some cases. See event attendant for details. Product selection is subject to change. Offer good while supplies last. Sales tax is not included in pricing. Cash, check and charge accepted.

LONGWOOD CAMPUS SUSTAINABILITY EVENTS

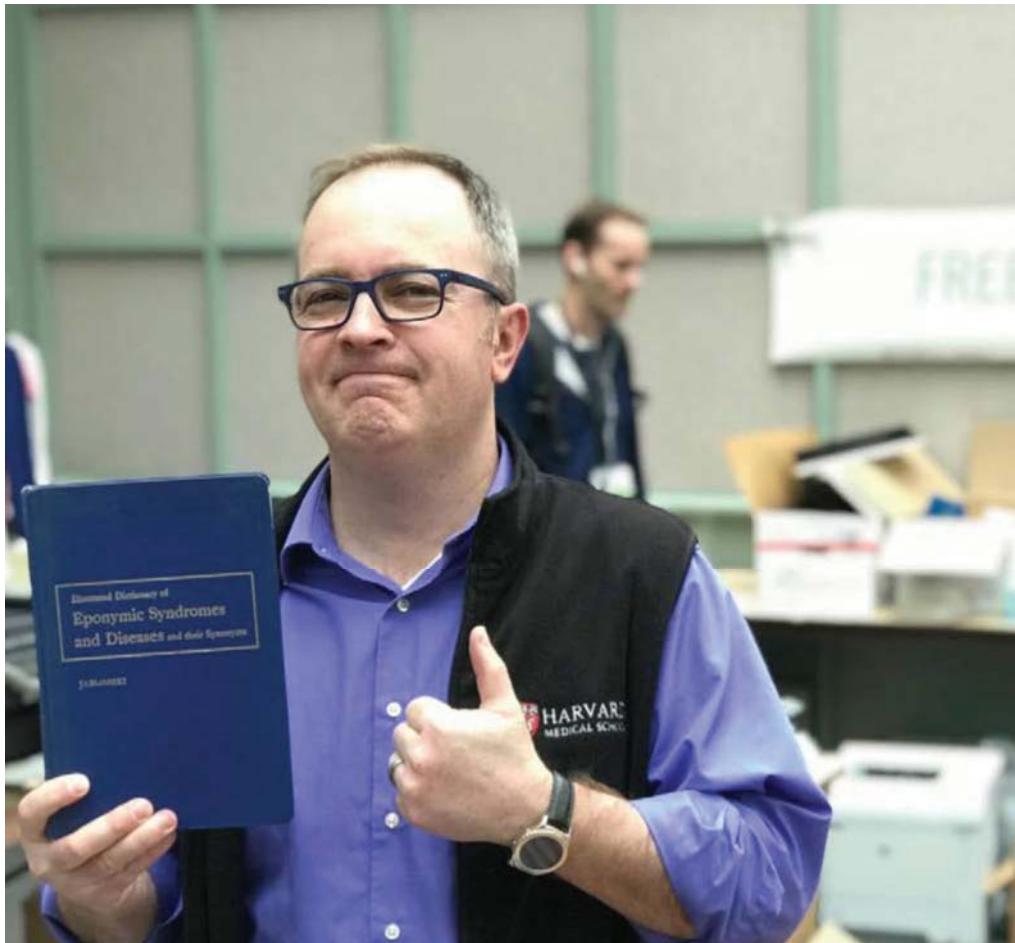


Event Description	Plan Focus Area	Date	# of attendees
Summer Garden Gathering	Nature & Eco., Culture & Learning	June 2018	200 Community Members
Commencement 2018, White Coat Ceremony	Campus Operations	May 2018	20 Waste Diversion Ambassadors
Arnold Arboretum Student Trips	Nature & Ecosystems	Oct. 2017, May 2018, August 2018	25 Harvard Longwood community members
Lab & Office Supply Freecycles, HMS and Harvard Chan School	Campus Operations	Oct. 2017, May 2018	+200 people at each
Take the Stairs	Health & Wellbeing	April 2018	+600 Community members, + 1.4 million flights of stairs
Earth Day Sustainability Fairs	Culture & Learning	April 2018	+250 Community members
Longwood Bicyclist Events: Bike Breakfast, Maintenance Classes	Health & Wellbeing	Sept. 2017, Sept. 2018	+300 Community members
Annual Campus Bike Fair	Campus Operations	September 2017, 2018	+300 Community members
Countway Garden Harvest Festival	Nature & Ecosystems	September 2017, 2018	150 Community members
EcoOpportunity Monthly Meetings	Culture & Learning	Monthly	5-10 participants monthly

ORIGINAL CONTENT and SOCIAL ENGAGEMENT



Spring 2018 Freecycles at HMS and HSPH



greenharvard • Following
Harvard Medical School

greenharvard You never know what you'll find at a Harvard Freecycle!

At today's @harvardmed event, Willy Lensch, Dean Daley's Chief of Staff, who has his PhD in Molecular and Medical Genetics, found this book on Eponymic Syndromes and Diseases.

#GreenHarvard #Harvard
#harvardmedicalschoo #sustainability
#freecycle #reuse #reducewaste
#anothermanstrashisanothermanstreuse

willy.lensch I was THRILLED to find this book!



Liked by harvardchansph and 140 others

APRIL 26, 2018

ORIGINAL CONTENT and SOCIAL ENGAGEMENT





Fall 2018 Freecycles at HMS and HSPH



greenharvard • Following

greenharvard There were lots of great finds and smiling faces at today's @harvardchansph #freecycle! #Reuse events like this are held across Harvard and throughout the year in offices, dorms and labs to encourage people to donate items to be rediscovered by others rather than ending up in the trash.

wellwithmike Love it! How often do you all hold events like these and where do you advertise them? 

adamjmeier @wellwithmike generally they're held twice/year - once during fall and once during spring semesters. HMS and HSPH hold them on back-to-back days. 

adamjmeier @wellwithmike we also reopened the Longwood Reuse Room in HSPH Bldg. 1 loading dock. open Wed. 



 Liked by bretttootis and 147 others

OCTOBER 24, 2018

Add a comment...



ORIGINAL CONTENT and SOCIAL ENGAGEMENT



HMS Facilities, Green Office Re-Certification, May 2018



greenharvard • Following
Harvard Medical School

greenharvard Shout out to our friends in the @HarvardMed Facilities Department on their re-certification of Leaf 4 Green Office, the highest level of achievement!

Thank you for all you do to encourage sustainability on the HMS campus, and for "practicing what you preach" in your own offices.

#GreenHarvard #Harvard #HarvardMed
#GreenOffice #Sustainability #LearnItLivIt
#SaveEnergy #ReduceWaste #ActOnClimate



Liked by harvardchansph and
145 others

MAY 22, 2018

Add a comment...



ORIGINAL CONTENT and SOCIAL ENGAGEMENT



HMS External Education, October 2018



Sustainable Harvard

@GreenHarvard

Following



Congratulations to [@harvardmed](#) Office for External Education for achieving Green Office Leaf Level Two recognition! They are now working on a green team video to educate their colleagues about waste reduction.





HARVARD
MEDICAL SCHOOL



HARVARD
Office for Sustainability

Connect

green.harvard.edu

@GreenHarvard

EcoOpportunity: goo.gl/ke8u1m

Learn more

Sustainability Plan

www.green.harvard.edu/plan

Sustainability Report

www.green.harvard.edu/report

Living lab

www.green.harvard.edu/livinglab